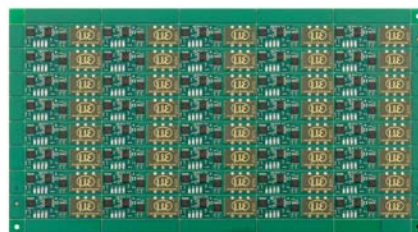


The MDS-40-LP sensors are specially designed for large volume production from 2,000 pieces. As these sensors are reduced to pure measurement technology, the creation of cost-effective PCB sensors was possible.

Their flat design and flexible arrangement of the magnets enable easy integration in restricted spaces. Measured values are output via a rectangular signal, which is easily evaluated via, for example, digital inputs from micro-controller.



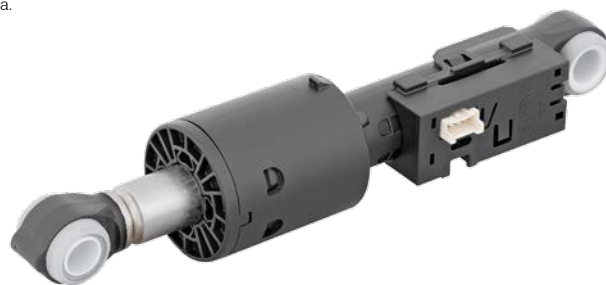
Exemplary OEM models	MDS-40-LP-SUS	MDS-40-LP-F
Measuring range ¹⁾	40 mm	40 mm
Typ. Linearity ²⁾	± 6 % FSO	± 9 % FSO
Temperature stability	± 0.06 % FSO/K	± 0.2 % FSO/K
Resolution	< 0.05% FSO	< 0.05 % FSO
Physical output parameters	period duration (rectangle): typ. 2.0 ms ... 3.3 ms (p. 19)	period duration (rectangle): typ. 1.0 ms ... 1.7 ms (p. 19)
Operating temperature	-20 ... +85 °C	
Supply voltage ³⁾	3.6 ... 5.3 VDC	
Current consumption ⁴⁾	typ. 15 mA (5 V) 12 mA (3.6 V)	
Typ. dimensions	50 x 15 x 3 mm	20.8 x 14.8 x 3 mm
Electrical connection	plug-in connection to a PCB; grid size 2.5 mm	
Minimum quantity	2,000 pc	5,000 pc

¹⁾ Measuring range changes by using other magnets (see p. 18); external magnetic fields and/or ferromagnetic material in the measuring range of the sensor system affect the sensor characteristic line and the technical data.

²⁾ Deviation to the regression curve according to the method of least squares

³⁾ Without reverse polarity protection, without overvoltage protection

⁴⁾ Without output load



Application example: Integration into a washing machine damper