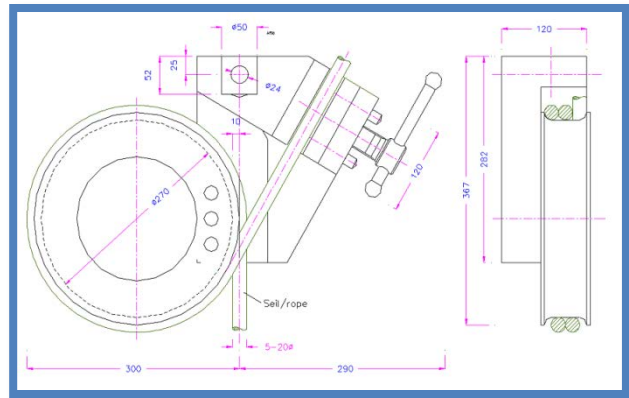


## Bollard Grips

The grip is suitable for samples such as rope and strapping tape. The grips are designed so that the sample can be wrapped around the bollard and clamped at one end, this helps reduce the sample suffering a jaw break and spreads the load around the bollard by introducing friction to the sample. Ideally it should be used with an extensometer to calculate true strain in the sample.

*Temperature Range 0 °C to + 70 °C*  
(Plates with other dimensions available on request)

|                         |               |
|-------------------------|---------------|
| 01/4628                 | Crosscut jaws |
| Jaw Size                | 120mm x 30mm  |
| Maximum Sample Width    | 12mm          |
| Maximum Sample Diameter | 5mm - 20mm    |
| Minimum Sample Length   | 1500mm        |
| Jaw Opening             | 20mm          |
| Maximum Force Rating    | 100KN         |
| Fixing Type             | 1 ¼ inch      |
| Weight                  | 45Kg          |
| Minimum Loadcell        | 2500N         |
| Width                   | 590mm         |
| Height                  | 385mm         |
| Depth                   | 120mm         |
| Bollard Diameter        | 270mm         |



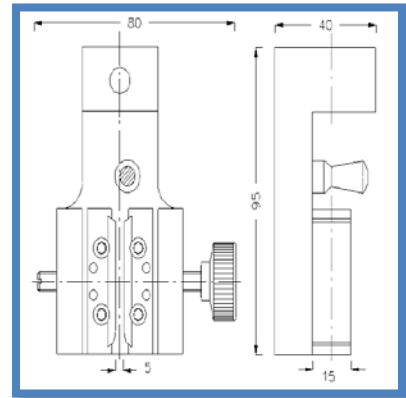
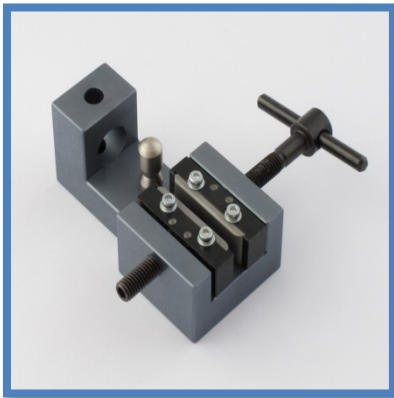
## Bollard Grips

Thin wire bollard grip, ideally it should be used with an extensometer to calculate true strain in the sample. Pneumatic versions are available

The 01/4617 is designed for thin wires and is best used with the diamond faces the sample can be wrapped around the bollard then doubled back on itself for additional gripping. The grip is fitted with carriers which act as a mounting place for the faces which are supplied separately

*Temperature Range 0 °C to + 70 °C*  
(Plates with other dimensions available on request)

|                         |  |
|-------------------------|--|
| 01/4617                 | Screw action, with carriers but without jaws |
| Maximum Sample Width    | 15mm   |
| Maximum Sample Diameter | 5mm  |
| Jaw Opening             | 5mm  |
| Maximum Force Rating    | 2.5kN  |
| Fixing Type             | 5/8 inch                                     |
| Weight                  | 380g   |
| Minimum Loadcell        | 50N  |
| Width                   | 80mm   |
| Height                  | 95mm   |
| Depth                   | 40mm   |



Shown above the grip with a preset face on one side and a adjustable T-bar on the other, the grip carrier plate and the plain and diamond faces. The outline drawing shown for reference only

| Part Number | Description                     | Max Sample Width | Sample Diameter | Opening | Rating | Fixing Type |
|-------------|---------------------------------|------------------|-----------------|---------|--------|-------------|
| 01/4618     | 15mm x 37mm diamond coated jaws | 15mm             | N/A             | N/A     | 2.5kN  | N/A         |
| 01/4619     | 15mm x 37mm plain jaw faces     | 15mm             | N/A             | N/A     | 2.5kN  | N/A         |

## Bollard Grips

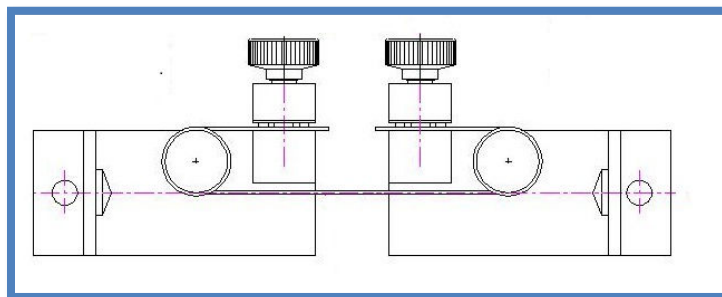
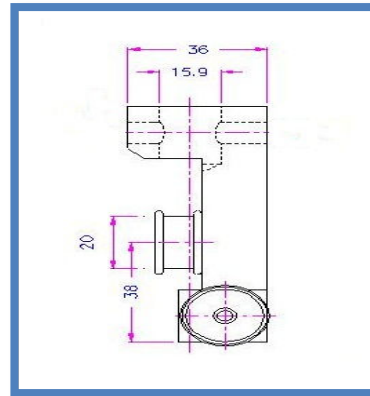
The Bollard grip is suitable for a wide range of samples such as fiber, yarn, thread, rope, string, and strapping tape. The grips are designed so that the sample can be wrapped around the bollard and clamped at one end, this helps reduce the sample suffering a jaw break and spreads the load around the bollard by introducing friction to the sample.

Ideally it should be used with an extensometer to calculate true strain in the sample

*Temperature Range 0 °C to + 70 °C*

*(Plates with other dimensions available on request)*

|                         |                                     |
|-------------------------|-------------------------------------|
| 01/4620                 | Screw action grip with rubber faces |
| Jaw Size                | 20mm x 10mm                         |
| Maximum Sample Width    | 7mm                                 |
| Maximum Sample Diameter | 2mm                                 |
| Jaw Opening             | 2mm                                 |
| Maximum Force Rating    | 1kN                                 |
| Fixing Type             | 5/8 inch                            |
| Weight                  | 290g                                |
| Minimum Loadcell        | 50N                                 |
| Width                   | 69mm                                |
| Height                  | 90mm                                |
| Depth                   | 36mm                                |
| Bollard Diameter        | 20mm                                |



Above the 01/4620 shown, the dimension drawing for reference and the sample loading method

## Bollard Grips

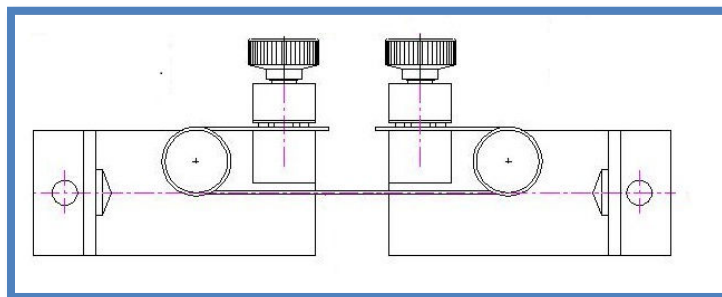
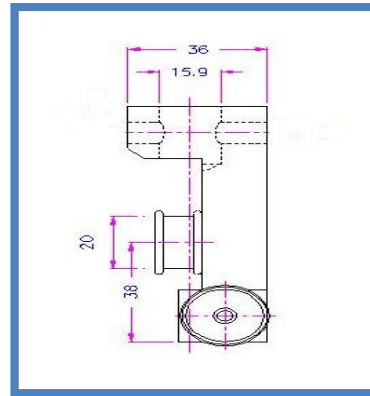
The Bollard grip is suitable for a wide range of samples such as fiber, yarn, thread, rope, string, and strapping tape. The grips are designed so that the sample can be wrapped around the bollard and clamped at one end, this helps reduce the sample suffering a jaw break and spreads the load around the bollard by introducing friction to the sample.

Ideally it should be used with an extensometer to calculate true strain in the sample

*Temperature Range 0 °C to + 70 °C*

*(Plates with other dimensions available on request)*

|                         |                                      |
|-------------------------|--------------------------------------|
| 01/4621                 | Screw action grip with diamond faces |
| Jaw Size                | 20mm x 10mm                          |
| Maximum Sample Width    | 7mm                                  |
| Maximum Sample Diameter | 2mm                                  |
| Jaw Opening             | 2mm                                  |
| Maximum Force Rating    | 1kN                                  |
| Fixing Type             | 5/8 inch                             |
| Weight                  | 290g                                 |
| Minimum Loadcell        | 50N                                  |
| Width                   | 69mm                                 |
| Height                  | 90mm                                 |
| Depth                   | 36mm                                 |
| Bollard Diameter        | 20mm                                 |



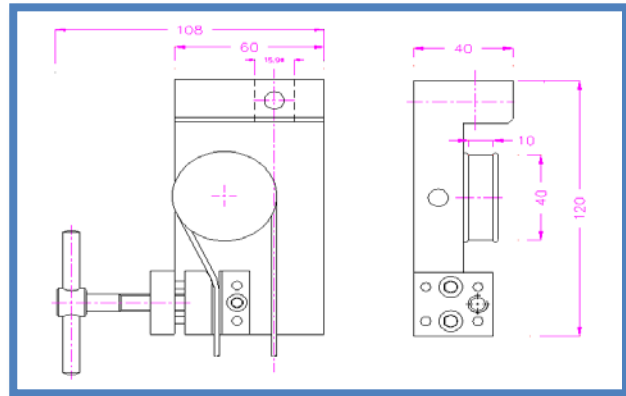
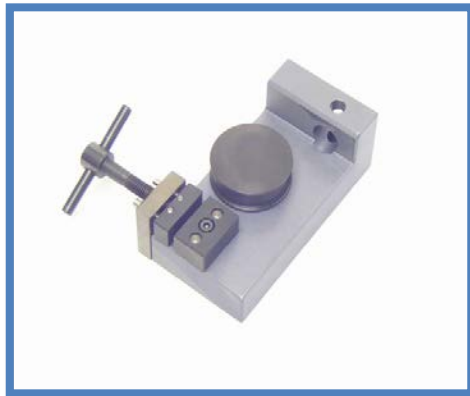
Above the 01/4621 shown, the dimension drawing for reference and the sample loading method

## Bollard Grips

The Bollard grip is suitable for a wide range of samples such as fiber, yarn, thread, rope, string, and strapping tape. The grips are designed so that the sample can be wrapped around the bollard and clamped at one end, this helps reduce the sample suffering a jaw break and spreads the load around the bollard by introducing friction to the sample. Ideally it should be used with an extensometer to calculate true strain in the sample

*Temperature Range 0 °C to + 70 °C*  
(Plates with other dimensions available on request)

|                         |                                       |
|-------------------------|---------------------------------------|
| 01/4622                 | Screw action grip with crosscut faces |
| Jaw Size                | 30mm x 12mm                           |
| Maximum Sample Width    | 8mm                                   |
| Maximum Sample Diameter | 5mm                                   |
| Jaw Opening             | 5mm                                   |
| Maximum Force Rating    | 5KN                                   |
| Fixing Type             | 5/8 inch                              |
| Weight                  | 800g                                  |
| Minimum Loadcell        | 50N                                   |
| Width                   | 108mm                                 |
| Height                  | 120mm                                 |
| Depth                   | 40mm                                  |
| Bollard Diameter        | 40mm                                  |



Above the 01/4622 grip and grip dimensions for reference only

## Bollard Grips

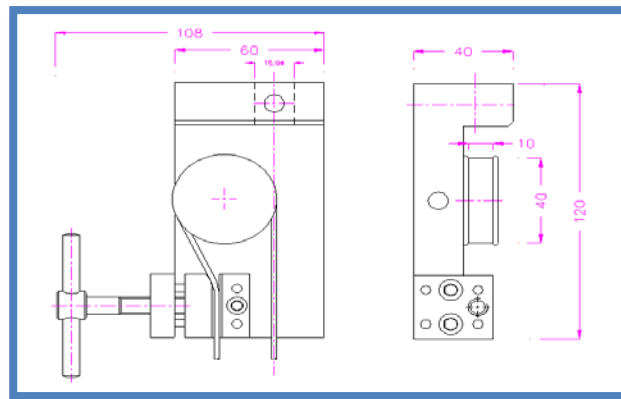
The Bollard grip is suitable for a wide range of samples such as fiber, yarn, thread, rope, string, and strapping tape. The grips are designed so that the sample can be wrapped around the bollard and clamped at one end, this helps reduce the sample suffering a jaw break and spreads the load around the bollard by introducing friction to the sample.

Ideally it should be used with an extensometer to calculate true strain in the sample

*Temperature Range 0 °C to + 70 °C*

*(Plates with other dimensions available on request)*

|                         |                                      |
|-------------------------|--------------------------------------|
| 01/4623                 | Screw action grip with diamond faces |
| Jaw Size                | 30mm x 12mm                          |
| Maximum Sample Width    | 8mm                                  |
| Maximum Sample Diameter | 5mm                                  |
| Jaw Opening             | 5mm                                  |
| Maximum Force Rating    | 5KN                                  |
| Fixing Type             | 5/8 inch                             |
| Weight                  | 800g                                 |
| Minimum Loadcell        | 50N                                  |
| Width                   | 108mm                                |
| Height                  | 120mm                                |
| Depth                   | 40mm                                 |
| Bollard Diameter        | 40mm                                 |



Above the 01/4623 grip and dimensions for reference only

## Bollard Grips

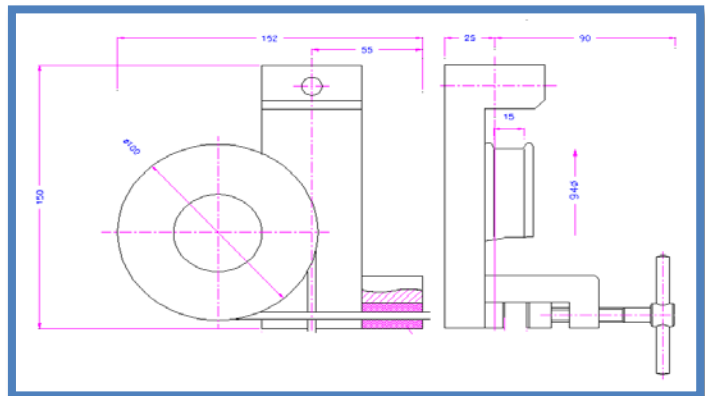
The Bollard grip is suitable for a wide range of samples such as yarn, rope, string, and strapping tape. The grips are designed so that the sample can be wrapped around the bollard and clamped at one end, this helps reduce the sample suffering a jaw break and spreads the load around the bollard by introducing friction to the sample.

Ideally it should be used with an extensometer to calculate true strain in the sample

*Temperature Range 0 °C to + 70 °C*

*(Plates with other dimensions available on request)*

|                         |                                       |
|-------------------------|---------------------------------------|
| 01/4624                 | Screw action grip with crosscut faces |
| Jaw Size                | 30mm x 15mm                           |
| Maximum Sample Width    | 9mm                                   |
| Maximum Sample Diameter | 9mm                                   |
| Jaw Opening             | 20mm                                  |
| Maximum Force Rating    | 20KN                                  |
| Fixing Type             | 5/8 inch                              |
| Weight                  | 2.7Kg                                 |
| Minimum Loadcell        | 500N                                  |
| Width                   | 152mm                                 |
| Height                  | 150mm                                 |
| Depth                   | 115mm                                 |
| Bollard Diameter        | 94mm                                  |



Above the 01/4624 shown with a rope sample and the outline drawing for reference

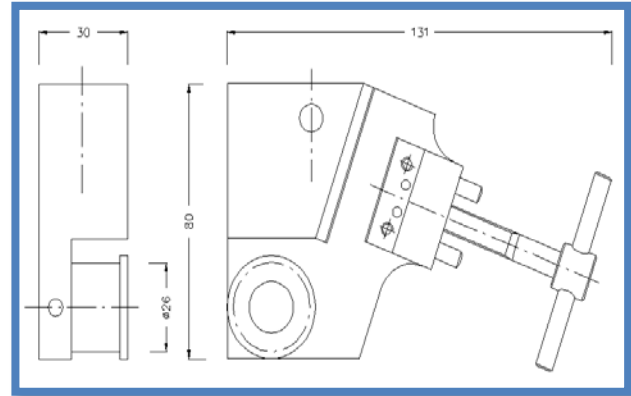
## Bollard Grips

A thin rope, yarn and thread bollard grip, ideally it should be used with an extensometer to calculate true strain in the sample. Pneumatic versions are available

The 01/4625 is designed for the tensile strength of fibers, wires, yarns, threads and ropes it is fitted with a crosscut face as standard with no optional faces

*Temperature Range 0 °C to + 70 °C*  
(Plates with other dimensions available on request)

|                         |   |
|-------------------------|---|
| 01/4625                 | Screw action with crosscut face 30mm x 15mm |
| Maximum Sample Width    | 15mm  |
| Maximum Sample Diameter | 5mm   |
| Jaw Opening             | 5mm   |
| Maximum Force Rating    | 5KN   |
| Fixing Type             | 5/8 inch                                    |
| Weight                  | 900g  |
| Minimum Loadcell        | 50N   |
| Width                   | 131mm                                       |
| Height                  | 80mm  |
| Depth                   | 30mm  |



The grip shown above with a dimension drawing for reference

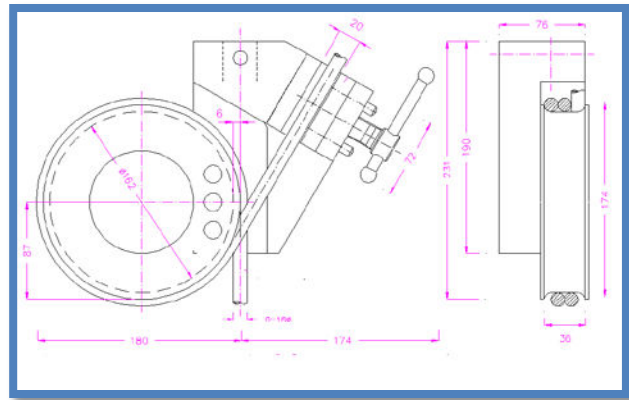


## Bollard Grips

The grip is suitable for samples such as rope and strapping tape. The grips are designed so that the sample can be wrapped around the bollard and clamped at one end, this helps reduce the sample suffering a jaw break and spreads the load around the bollard by introducing friction to the sample. Ideally it should be used with an extensometer to calculate true strain in the sample

*Temperature Range 0 °C to + 70 °C*  
(Plates with other dimensions available on request)

|                         |               |
|-------------------------|---------------|
| 01/4628                 | Crosscut jaws |
| Jaw Size                | 70mm x 30mm   |
| Maximum Sample Width    | 12mm          |
| Maximum Sample Diameter | 20mm          |
| Minimum Sample Length   | 1500mm        |
| Jaw Opening             | 20mm          |
| Maximum Force Rating    | 50KN          |
| Fixing Type             | 1 ¼ inch      |
| Weight                  | 13.9Kg        |
| Minimum Loadcell        | 1000N         |
| Width                   | 354mm         |
| Height                  | 231mm         |
| Depth                   | 76mm          |
| Bollard Diameter        | 162mm         |



Above the grip shown and the dimension drawing for reference